

# How to get to the ACCIDENT & EMERGENCY DEPARTMENT at Hôtel-Dieu hospital?

📍 7, rue de la Cité - Paris, 4th arrondissement



## On public transport:

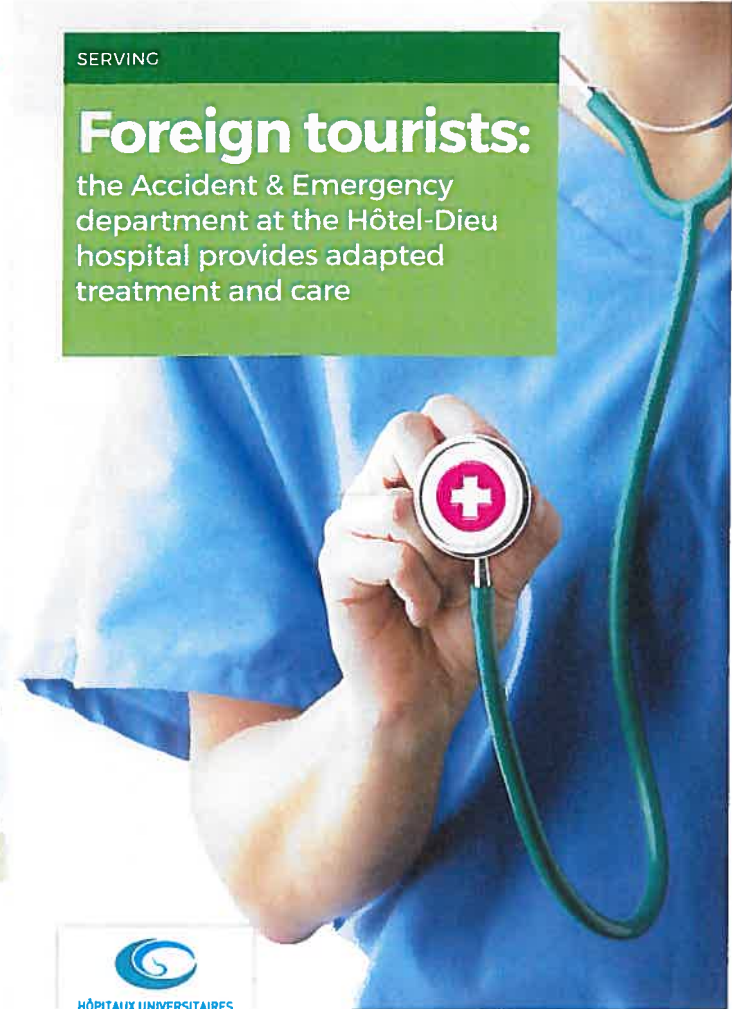
 21-24-27-47-38 85-96 
  4 Cité 
  RER 
  B Saint-Michel/Notre-Dame

11 / 2016 - Communication Department, HUPC  
Photos: Fotolia.com - Design and Execution: www.grainesoctets.com

SERVING

## Foreign tourists:

the Accident & Emergency department at the Hôtel-Dieu hospital provides adapted treatment and care

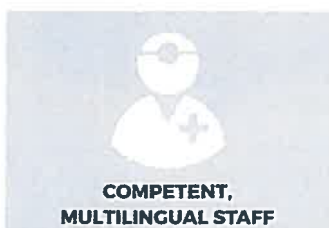
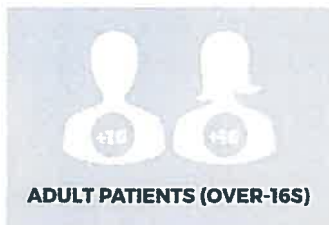


ASSISTANCE  
PUBLIQUE  HÔPITAUX  
DE PARIS  
GREATER PARIS UNIVERSITY HOSPITALS

# The Accident & Emergency department at the Hôtel-Dieu hospital is open round the clock, every day of the year.

## Medical care tailored to your health issues, in your own language

- ✓ Care is provided for adults only,
- ✓ Healthcare staff are experienced and multilingual,
- ✓ A comprehensive medical and technological platform that's easy to reach.



You may also dial the free emergency numbers:



**112**

or

**15**

and



**114**\*

\* Only for the deaf and hard of hearing, and those with dysphasia or aphasia.

## Formalities to facilitate care

### On arrival at the Accident & Emergency department you must:



**SHOW SOME FORM OF ID AND GIVE YOUR ADDRESS WHILE ABROAD**



**FILL IN THE FORM WHICH WILL BE GIVEN TO YOU IN YOUR LANGUAGE**



**BRING A MEANS OF PAYMENT TO PAY YOUR HEALTHCARE BILLS IN FULL**

- ▶ If you have a European Health Insurance Card (EHIC), you will only be billed for care not covered by your home country's health service.
- ▶ If you have private insurance, you need to inform the insurance company. The care provided will be listed for you to claim refunds.